

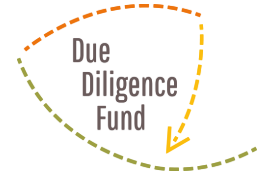
Due  
Diligence  
Fund

## "From the legal code to the agricultural supply chain"

Putting corporate due diligence into practice:  
The Due Diligence Fund

**Q&A**

Johannes Luderich



- DDF Goal & Strategy
- Who can apply?
- Which projects can be funded?
- Based on which criteria are projects selected?
- How does the process work?
- Next steps to your application
- Q & A



**Goal:** fulfilling **corporate due diligence obligations** with regard to human rights and the environment in agricultural supply chains. Focus: **Primary producers** in partner countries

### Challenges

- Creation of **Best Practices**
- **Technological innovations**
- **Cooperative approaches**
- **(depth of) risk analysis**
- **Complaint mechanisms**
- **Involvement of stakeholders**



**DDF's strategy: Pilot** promising, innovative and/or sector-wide project ideas, derive **best practices** for own/other supply chains and **disseminate learning experiences**



## Partnership application consisting of:

### ✓ **Business Partner:**

- Private sector company, with operations in agricultural supply chains
- Registered in **EU, EEA, UK, Switzerland** or **BMZ partner country**
- Financial contribution according to enterprise size (25-100% funding sum)

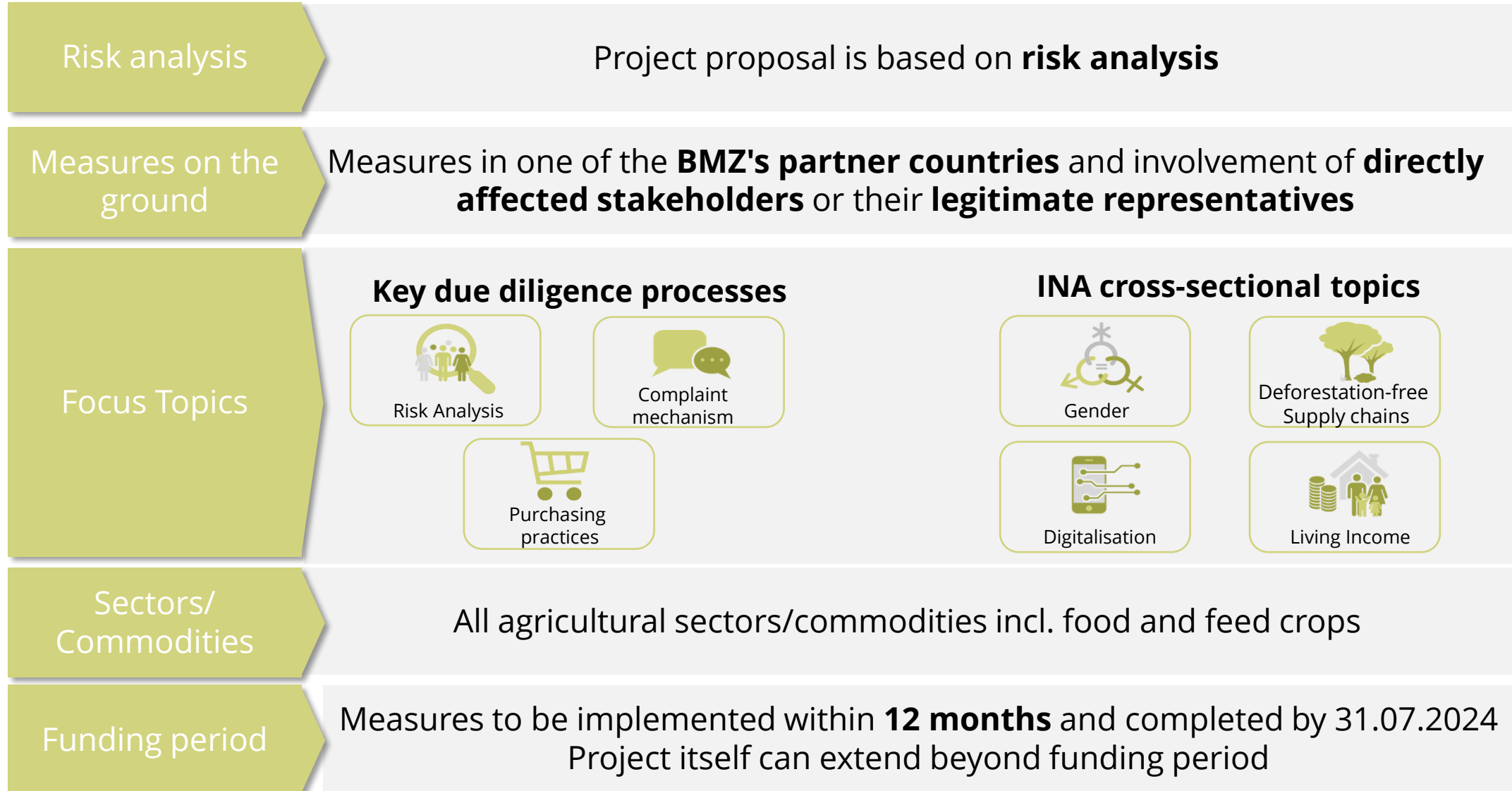
### ✓ **Public-Benefit Partner:**

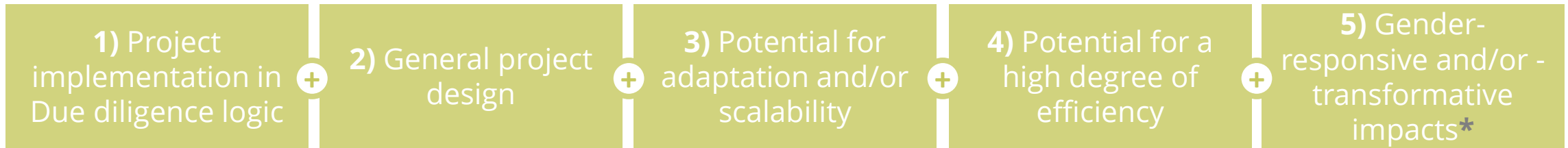
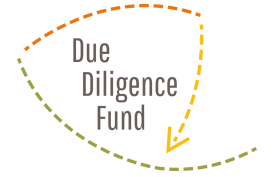
- Institution/organization/corporation with public-benefit status
- Registered in **EU, EEA, UK, Switzerland** or a **BMZ partner country**
- Usually the financial recipient of DDF funding

### ***Cooperation partner***

- Local partners, foundations + associations, multi-stakeholder initiatives
- Part of the implementation, can receive / contribute funding

# Which projects can be funded?





## The DDF supports projects

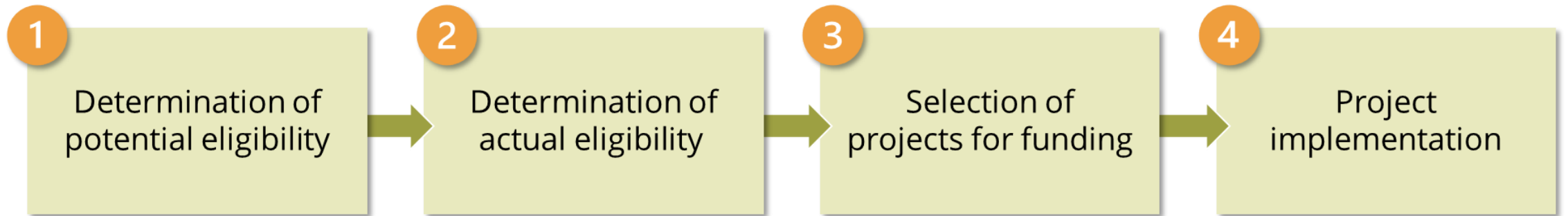
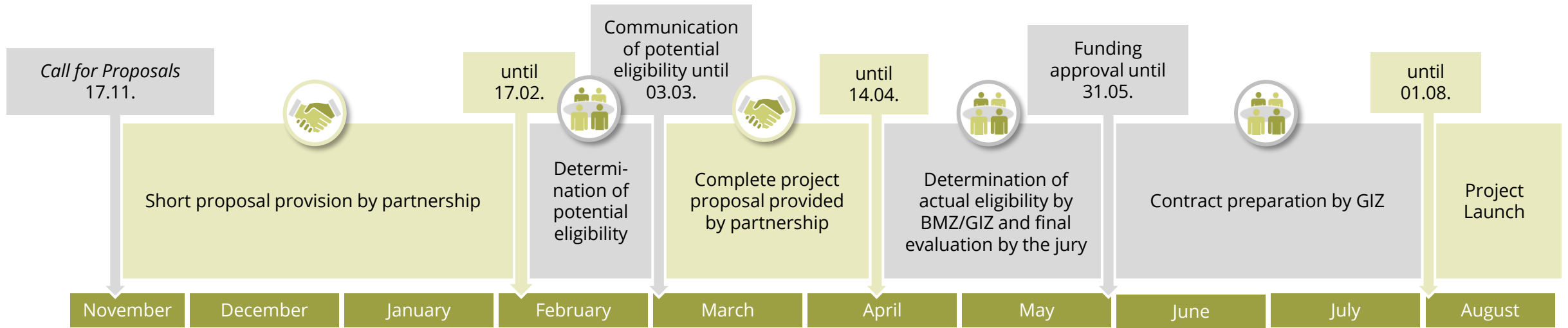
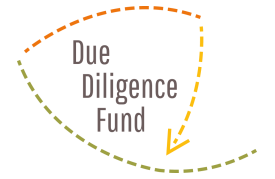
- ✓ whose methodological **approach is suitable for adaptation by other companies** in the agricultural and food sector
- ✓ which have a particularly **high potential to mitigate human rights and environmental risks** effectively and sustainably
- ✓ which embed the intended measures in a **process-oriented implementation logic**

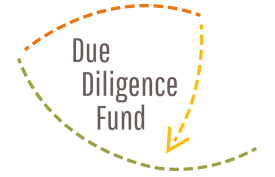


### \*5) Special gender corridor:

the two projects that **score highest** in criterion 5 are **guaranteed funding**

# How does the process work?

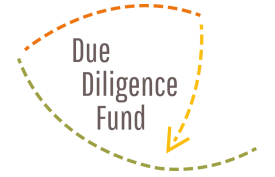




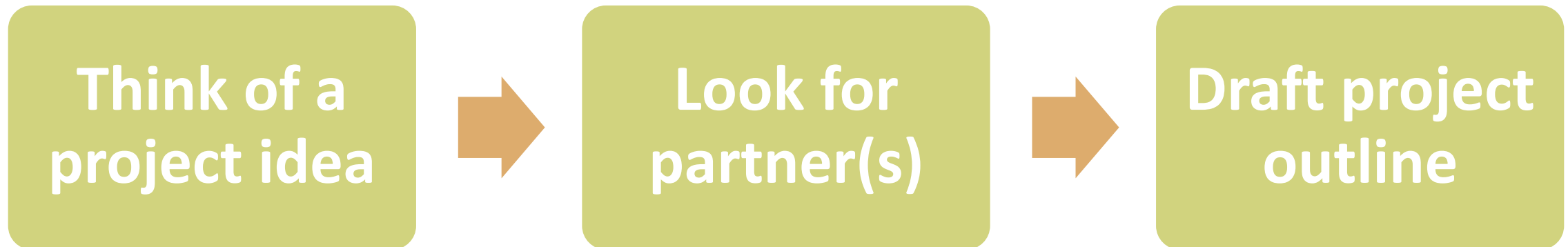
<p><b>Increasing women's incomes</b> by building a sustainable gum arabic supply chain with an <b>integrated grievance mechanism</b></p>	<p><b>Gum Arabic</b> in Uganda</p>
<p><b>Risk analyses</b> for approx. 20 <b>spices/herbs</b> &amp; provision of risk information in database</p>	<p><b>Botanicals</b> in China, Brasil, Indonesia</p>
<p>Development of an <b>inter-company grievance mechanism</b> for the cocoa sector in CIV</p>	<p><b>Cocoa</b> in Côte d'Ivoire</p>
<p>Common <b>grievance mechanism</b> for the Brazilian coffee supply chain</p>	<p><b>Coffee</b> in Brasil</p>
<p>Empowerment of a <b>cooperative of cashew farmers</b> (focus on child labor and gender equality, due diligence training)</p>	<p><b>Cashew</b> in Côte d'Ivoire</p>
<p>Establishing <b>transparency and traceability</b> in the cotton supply chain</p>	<p><b>Cotton</b> in Pakistan</p>



# What support is provided by INA?



Application procedure	Public Q&A-sessions + <b>individual support</b>
Drafting	<b>Further development</b> of the project idea; <b>search for project partners</b> (also on site)
Project support	„ <b>Companionship</b> “ by INA experts from topic areas
Public relations	<b>Communication on INA platforms</b> (e.g., website, LinkedIn, events)



contact [ddf@giz.de](mailto:ddf@giz.de) for support at any time!



.. Application procedure: open until **February 19th, 2023**

Find further information on:



<https://www.nachhaltige-agrarlieferketten.org/foerderungen/due-diligence-fund/>



[ddf@giz.de](mailto:ddf@giz.de)



[INA Lunchbreak Recording]

We are looking forward to receiving your applications!